

SOUTHEAST NEW MEXICO COLLEGE

FALL 2022



Southeast New Mexico College

# Important Dates - August 17 - December 9, 2022

|  | <b>16 Week</b>      | <b>1<sup>st</sup> Eight Week</b> | <b>2<sup>nd</sup> Eight Week</b> |
|--|---------------------|----------------------------------|----------------------------------|
|  | <b>8/17 – 12/ 9</b> | <b>8/17 – 10/10</b>              | <b>10/11 – 12/ 9</b>             |
| Faculty Report   | August 15           | August 15                        | October 7                        |
| First day of classes   | August 17           | August 17                        | October 11                       |
| Last day to add a class without instructor's signature   | August 18           | August 18                        | October 12                       |
| Deadline to File a Degree  | August 26           | August 26                        | August 26                        |
| Last day to add a class with instructor's signature  | August 26           | August 22                        | October 14                       |
| CENSUS – Last Day to Cancel Registration WITHOUT W (Drop online or with Advisor / College) (100% refund) | September 2         | August 26                        | October 20                       |
| Labor Day Holiday  | September 5         | September 5                      | NA                               |
| Grading Opens – Early Performance (8:00 a.m.)  | September 23        | NA                               | NA                               |
| Grading Closes – Early Performance (5:00 p.m.)   | September 27        | NA                               | NA                               |
| Deadline to File a Degree \$50 Late Fee Assessed   | October 3           | October 3                        | October 3                        |
| Indigenous Peoples Day (special programming)   | October 10          | October 10                       | NA                               |
| Last day to Withdraw from a Single Course With a "W" (no refund)   | October 14          | September 15                     | November 9                       |
| Thanksgiving Holiday   | Nov 21 – 25         | NA                               | Nov 21 – 25                      |
| Last Day to Withdraw from the University (by 4:59 pm) (no refund)  | December 2          | October 3                        | December 2                       |
| Grading Opens (5:00 p.m.)  | December 2          | October 3                        | December 2                       |
| Final Exams  | Dec 5 – 9           | Oct 7 – 10                       | Dec 8 – 9                        |
| Last Day of Classes  | December 9          | October 10                       | December 9                       |
| Faculty Deadline to Submit Final Grades (5:00 p.m.)  | December 13         | October 12                       | December 13                      |

New Mexico State University

Class Schedule for

**Southeast New Mexico College**

MS1 = First 8 weeks

MS2 = Second 8 weeks

SC = Short course

Note: The federal Government now says that for an online student to receive financial aid, that student must complete an assignment or discussion to be considered "attending." The assignment could be as simple as a question.

**ACCT-ACCOUNTING**

| CRN   | CRS       | SEC | POT | Cr | Title                 | Notes | Time | Day | Rm  | Instructor       |
|-------|-----------|-----|-----|----|-----------------------|-------|------|-----|-----|------------------|
| 62245 | ACCT 2110 | C71 | 1   | 3  | PRINCIPLES OF ACCT I  |       |      |     | WEB | Hancock, Rebecca |
| 62254 | ACCT 2120 | C71 | 1   | 3  | PRINCIPLES OF ACCT II |       |      |     | WEB | Hancock, Rebecca |
| 62253 | ACCT 200  | C71 | 1   | 3  | A SURVEY OF ACCT      |       |      |     | WEB | Hancock, Rebecca |

**AHS-ALLIED HEALTH SCIENCE**

| CRN   | CRS     | SEC | POT | Cr | Title                 | Notes | Time | Day | Rm  | Instructor         |
|-------|---------|-----|-----|----|-----------------------|-------|------|-----|-----|--------------------|
| 60704 | AHS 120 | C72 | 1   | 3  | MEDICAL TERMINOLOGY   |       |      |     | WEB | Titus, Pamela      |
| 52187 | AHS 140 | C71 | 1   | 4  | ESSENT OF ANAT & PHYS |       |      |     | WEB | Williams, Destinee |

**ANTH-ANTHROPOLOGY**

| CRN   | CRS        | SEC | POT | Cr | Title                 | Notes | Time      | Day | Rm  | Instructor      |
|-------|------------|-----|-----|----|-----------------------|-------|-----------|-----|-----|-----------------|
| 66194 | ANTH 1115G | C11 | 1   | 3  | INTRO TO ANTHROPOLOGY |       | 1730-1845 |     | 250 | McIntosh, David |
| 65440 | ANTH 1115G | C71 | 1   | 3  | INTRO TO ANTHROPOLOGY |       |           |     | WEB | TBA             |

**ARTH-ART HISTORY**

| CRN   | CRS        | SEC | POT | Cr | Title              | Notes | Time | Day | Rm  | Instructor     |
|-------|------------|-----|-----|----|--------------------|-------|------|-----|-----|----------------|
| 52042 | ARTH 1115G | C71 | 1   | 3  | ORIENTATION IN ART |       |      |     | WEB | Moore, Deborah |
| 61933 | ARTH 1115G | C72 | MS2 | 3  | ORIENTATION IN ART |       |      |     | WEB | Moore, Deborah |

**ASTR-ASTRONOMY**

| CRN   | CRS        | SEC | POT | Cr | Title       | Notes | Time | Day | Rm  | Instructor     |
|-------|------------|-----|-----|----|-------------|-------|------|-----|-----|----------------|
| 54595 | ASTR 1115G | C71 | 1   | 4  | INTRO ASTRO |       |      |     | WEB | Huguley, Jesse |
| 50866 | ASTR 1120G | C71 | 1   | 4  | THE PLANETS |       |      |     | WEB | Huguley, Jesse |

**AUTO-AUTOMOTIVE TECHNOLOGY**

| CRN   | CRS      | SEC | POT | Cr | Title                    | Notes | Time      | Day | Rm | Instructor      |
|-------|----------|-----|-----|----|--------------------------|-------|-----------|-----|----|-----------------|
| 54126 | AUTO 112 | C11 | 1   | 5  | BASIC GASOLINE ENGINE    |       | 1715-2000 |     |    | Quintana, David |
| 57264 | AUTO 132 | C11 | 1   | 4  | AUTO AC/HTNG SYSTEMS     |       | 1700-2000 |     |    | Quintana, David |
| 57263 | AUTO 117 | C11 | 1   | 5  | ELT ANLYS TUNE-UP GAS EN |       | 1700-2030 |     |    | Quintana, David |
| 57266 | AUTO 125 | C11 | 1   | 5  | BRAKES                   |       | 1700-2000 |     |    | Quintana, David |

**BCIS-BUSINESS COMPUTER SYSTEMS**

| CRN   | CRS       | SEC | POT | Cr | Title                        | Notes | Time | Day | Rm  | Instructor     |
|-------|-----------|-----|-----|----|------------------------------|-------|------|-----|-----|----------------|
| 41510 | BCIS 1110 | C71 | 1   | 3  | INTRO TO INFORMATION SYSTEMS |       |      |     | WEB | Mohamed, Fuad  |
| 41512 | BCIS 1110 | C72 | 1   | 3  | INTRO TO INFORMATION SYSTEMS |       |      |     | WEB | Montoya, Julia |
| 62255 | BCIS 1110 | C73 | MS2 | 3  | INTRO TO INFORMATION SYSTEMS |       |      |     | WEB | Mohamed, Fuad  |

**BIOL-BIOLOGY**

| CRN   | CRS        | SEC | POT | Cr | Title                          | Notes | Time | Day | Rm  | Instructor          |
|-------|------------|-----|-----|----|--------------------------------|-------|------|-----|-----|---------------------|
| 62240 | BIOL 2210  | C81 | 1   | 4  | HUMN ANTMY & PHYS I (HLTH SCI) |       |      |     |     | Wiedenmann, Richard |
| 56698 | BIOL 2310L | C71 | 1   | 1  | MICROBIOLOGY LAB               |       |      |     | WEB | Girmus, Ronald      |
| 61685 | BIOL 2610G | C71 | 1   | 3  | BIODIVERSITY, ECOLOGY&EVOL     |       |      |     | WEB | Reid, Autumn        |
| 56697 | BIOL 2310  | C71 | 1   | 3  | MICROBIOLOGY                   |       |      |     | WEB | Girmus, Ronald      |
| 61692 | BIOL 2225  | C71 | 1   | 4  | HUMAN ANATOMY & PHYSIOLOGY II  |       |      |     | WEB | Girmus, Ronald      |
| 62240 | BIOL 2210  | C81 | 1   | 4  | HUMN ANTMY & PHYS I (HLTH SCI) |       |      |     | WEB | Wiedenmann, Richard |
| 48637 | BIOL 2210  | C71 | 1   | 4  | HUMN ANTMY & PHYS I (HLTH SCI) |       |      |     | WEB | Girmus, Ronald      |
| 61684 | BIOL 1120L | C73 | 1   | 1  | HUMAN BIOLOGY LAB              |       |      |     | WEB | Hernandez, Ashley   |

New Mexico State University

Class Schedule for

**Southeast New Mexico College**

MS1 = First 8 weeks

MS2 = Second 8 weeks

SC = Short course

Note: The federal Government now says that for an online student to receive financial aid, that student must complete an assignment or discussion to be considered "attending." The assignment could be as simple as a question.

|       |            |     |   |   |                                   |  |  |  |     |                     |
|-------|------------|-----|---|---|-----------------------------------|--|--|--|-----|---------------------|
| 51510 | BIOL 1120L | C71 | 1 | 1 | HUMAN BIOLOGY LAB                 |  |  |  | WEB | Girmus, Ronald      |
| 51509 | BIOL 1120G | C71 | 1 | 3 | HUMAN BIOLOGY                     |  |  |  | WEB | Girmus, Ronald      |
| 61682 | BIOL 1120G | C73 | 1 | 3 | HUMAN BIOLOGY                     |  |  |  | WEB | Hernandez, Ashley   |
| 51511 | BIOL 2210  | C72 | 1 | 4 | HUMN ANTMY & PHYS I<br>(HLTH SCI) |  |  |  | WEB | Wiedenmann, Richard |
| 61687 | BIOL 2610L | C71 | 1 | 1 | BIODIVERSITY,<br>ECOLOGY&EVOL LAB |  |  |  | WEB | Reid, Autumn        |

**BMGT-BUSINESS MANAGEMENT**

| CRN   | CRS      | SEC | POT | Cr | Title                          | Notes | Time | Day | Rm  | Instructor         |
|-------|----------|-----|-----|----|--------------------------------|-------|------|-----|-----|--------------------|
| 64197 | BMGT 201 | C73 | MS2 | 3  | WORK READY AND PREP            |       |      |     | WEB | Strahan, Jon       |
| 60830 | BMGT 282 | C71 | MS1 | 3  | INTRO INTERNATIONAL<br>BUS MGT |       |      |     | WEB | Borkorm, Bright    |
| 60829 | BMGT 201 | C71 | 1   | 3  | WORK READY AND PREP            |       |      |     | WEB | Wilkes, Evangeline |
| 63405 | BMGT 287 | C71 | MS2 | 3  | INTRO TO EXPORT/IMPORT         |       |      |     | WEB | Staley, Shane      |

**BUSA-BUSINESS ADMINISTRATION**

| CRN   | CRS       | SEC | POT | Cr | Title             | Notes | Time | Day | Rm  | Instructor      |
|-------|-----------|-----|-----|----|-------------------|-------|------|-----|-----|-----------------|
| 43953 | BUSA 1110 | C71 | 1   | 3  | INTRO TO BUSINESS |       |      |     | WEB | Strahan, Jon    |
| 43954 | BUSA 1110 | C72 | 1   | 3  | INTRO TO BUSINESS |       |      |     | WEB | Ragona, Lisbeth |
| 60007 | BUSA 1110 | C73 | MS2 | 3  | INTRO TO BUSINESS |       |      |     | WEB | Strahan, Jon    |

| CRN   | CRS     | SEC | POT | Cr | Title                | Notes | Time | Day | Rm  | Instructor       |
|-------|---------|-----|-----|----|----------------------|-------|------|-----|-----|------------------|
| 60652 | C E 151 | C71 | 1   | 3  | INTRDN TO CIVIL ENGR |       |      |     | WEB | Al-Nouman, Jamil |

**CCDM-DEVELOPMENTAL MATHEMATICS**

| CRN   | CRS        | SEC | POT | Cr | Title                 | Notes | Time      | Day | Rm  | Instructor       |
|-------|------------|-----|-----|----|-----------------------|-------|-----------|-----|-----|------------------|
| 53701 | CCDM 105 N | C11 | 1   | 5  | MATH PREP PRE-ALGEBRA |       | 1730-1945 |     | 204 | Addington, April |
| 66428 | CCDM 114 N | C72 | 1   | 4  | ALGEBRA SKILLS        |       |           |     | WEB | TBA              |
| 66484 | CCDM 114 N | C73 | 1   | 4  | ALGEBRA SKILLS        |       |           |     | WEB | TBA              |
| 53866 | CCDM 114 N | C71 | 1   | 4  | ALGEBRA SKILLS        |       |           |     | WEB | Aryal, Pradip    |
| 53699 | CCDM 105 N | C02 | 1   | 5  | MATH PREP PRE-ALGEBRA |       | 1300-1515 |     | 250 | Huston, Diana    |
| 64525 | CCDM 114 N | C01 | 1   | 4  | ALGEBRA SKILLS        |       | 0830-1045 |     | 250 | Huston, Diana    |
| 64526 | CCDM 114 N | C11 | 1   | 4  | ALGEBRA SKILLS        |       | 1730-1945 |     | 204 | Aryal, Pradip    |

**CCDR-DEVELOPMENTAL READING**

| CRN   | CRS        | SEC | POT | Cr | Title                 | Notes   | Time      | Day | Rm  | Instructor   |
|-------|------------|-----|-----|----|-----------------------|---|-----------|-----|-----|--------------|
| 64539 | CCDR 110 N | C01 | 1   | 3  | EFFECTIVE COLLEGE RDG | This is an ALP section. Students must enroll in COMM 1115G C74 CRN 58393. | 1300-1415 |     | 150 | Martin, Ruth |

**CCDS-DEVELOPMENTAL SKILLS**

| CRN   | CRS        | SEC | POT | Cr | Title             | Notes   | Time      | Day | Rm  | Instructor       |
|-------|------------|-----|-----|----|-------------------|---|-----------|-----|-----|------------------|
| 62396 | CCDS 113 N | C71 | 1   | 2  | STUDY SKILLS/ENGL | This is an ALP section. Students must enroll in ENGL 1110G C79 CRN 44526. | 1730-1820 |     | WEB | Wilson, Jonathan |
| 62395 | CCDS 113 N | C01 | 1   | 2  | STUDY SKILLS/ENGL | This is an ALP section. Students must enroll in ENGL 1110G C02 CRN 62394. | 1000-1050 |     | 213 | Fry, John        |
| 63399 | CCDS 113 N | C02 | 1   | 2  | STUDY SKILLS/ENGL | This is an ALP section. Students must enroll in ENGL 1110G C05 CRN 55046. | 1445-1535 |     | 213 | Wilson, Jonathan |
| 62392 | CCDS 113 N | C03 | 1   | 2  | STUDY SKILLS/ENGL | This is an ALP section. Students must enroll in ENGL 1110G C04 CRN 62427. | 1300-1350 |     | 213 | Fry, John        |

**CEPY-COUNSELING & ED. PSY**

| CRN   | CRS        | SEC | POT | Cr | Title                        | Notes | Time      | Day | Rm  | Instructor  |
|-------|------------|-----|-----|----|------------------------------|-------|-----------|-----|-----|-------------|
| 48602 | CEPY 2110  | C71 | 1   | 3  | LEARNING IN THE<br>CLASSROOM |       |           |     | WEB | Vacca, John |
| 62244 | CEPY 1120G | C81 | 1   | 3  | HUMAN GROWTH &<br>BEHAVIOR   |       | 0830-0945 |     | 151 | Vacca, John |

New Mexico State University

Class Schedule for

**Southeast New Mexico College**

MS1 = First 8 weeks

MS2 = Second 8 weeks

SC = Short course

Note: The federal Government now says that for an online student to receive financial aid, that student must complete an assignment or discussion to be considered "attending." The assignment could be as simple as a question.

|       |            |     |     |   |                         |  |  |  |     |                   |
|-------|------------|-----|-----|---|-------------------------|--|--|--|-----|-------------------|
| 64023 | CEPY 1120G | C73 | 1   | 3 | HUMAN GROWTH & BEHAVIOR |  |  |  | WEB | Cantwell, Felecia |
| 44973 | CEPY 1120G | C71 | 1   | 3 | HUMAN GROWTH & BEHAVIOR |  |  |  | WEB | Vacca, John       |
| 50048 | CEPY 1120G | C72 | MS2 | 3 | HUMAN GROWTH & BEHAVIOR |  |  |  | WEB | Vacca, John       |

**CHEM-CHEMISTRY**

| CRN   | CRS        | SEC | POT | Cr | Title                          | Notes | Time      | Day | Rm  | Instructor        |
|-------|------------|-----|-----|----|--------------------------------|-------|-----------|-----|-----|-------------------|
| 64535 | CHEM 1215G | C71 | 1   | 4  | GENERAL CHEMISTRY I            |       |           |     | WEB | Huang, Yiqun      |
| 62517 | CHEM 2120  | C71 | 1   | 3  | INTEGRATED ORG CHEM & BIOCHEM  |       |           |     | WEB | Huang, Yiqun      |
| 61701 | CHEM 1225G | C71 | 1   | 4  | GENERAL CHEMISTRY II           |       |           |     | WEB | Huang, Yiqun      |
| 61728 | CHEM 1120G | C73 | 1   | 4  | INTRO CHEM LEC+LAB (NON-MAJOR) |       |           |     | WEB | Abdaljalil, Talal |
| 61693 | CHEM 1120G | C72 | 1   | 4  | INTRO CHEM LEC+LAB (NON-MAJOR) |       |           |     | WEB | Huang, Yiqun      |
| 60647 | CHEM 1120G | C71 | 1   | 4  | INTRO CHEM LEC+LAB (NON-MAJOR) |       |           |     | WEB | Huang, Yiqun      |
| 58156 | CHEM 1215G | C01 | 1   | 4  | GENERAL CHEMISTRY I            |       | 1000-1230 |     | 201 | Huang, Yiqun      |

**CJUS-CRIMINAL JUSTICE**

| CRN   | CRS        | SEC | POT | Cr | Title                           | Notes | Time      | Day | Rm  | Instructor      |
|-------|------------|-----|-----|----|---------------------------------|-------|-----------|-----|-----|-----------------|
| 62206 | CJUS 2220  | C11 | 1   | 3  | AMERICAN LAW ENFORCEMENT SYSTEM |       | 1730-1845 |     | 152 | Mourhat, Karima |
| 44408 | CJUS 1110G | C01 | 1   | 3  | INTRO TO CRIMINAL JUSTICE       |       | 0900-1015 |     | 152 | Mourhat, Karima |
| 65441 | CJUS 1110G | C71 | 1   | 3  | INTRO TO CRIMINAL JUSTICE       |       |           |     | WEB | Mourhat, Karima |
| 50874 | CJUS 1120  | C01 | 1   | 3  | CRIMINAL LAW                    |       | 1000-1115 |     | 152 | Mourhat, Karima |
| 62205 | CJUS 2150  | C71 | 1   | 3  | CORRECTIONS SYSTEM              |       |           |     | WEB | Mourhat, Karima |

**COMM-COMMUNICATION**

| CRN   | CRS        | SEC | POT | Cr | Title                         | Notes  | Time      | Day | Rm  | Instructor     |
|-------|------------|-----|-----|----|-------------------------------|--|-----------|-----|-----|----------------|
| 63402 | COMM 1130G | C72 | MS2 | 3  | PUBLIC SPEAKING               |  |           |     | WEB | Nisbett, Vicki |
| 58392 | COMM 1130G | C01 | 1   | 3  | PUBLIC SPEAKING               |  | 1430-1545 |     | 151 | Martin, Ruth   |
| 61504 | COMM 1115G | C73 | MS1 | 3  | INTRODUCTION TO COMMUNICATION |  |           |     | WEB | Martin, Ruth   |
| 57694 | COMM 1115G | C72 | MS1 | 3  | INTRODUCTION TO COMMUNICATION |  |           |     | WEB | Flowers, Karla |
| 58393 | COMM 1115G | C02 | 1   | 3  | INTRODUCTION TO COMMUNICATION | This is an ALP section. Students must enroll in CDR 1110N C01 CRN 64539. | 1130-1245 |     | 150 | Martin, Ruth   |
| 44503 | COMM 1115G | C71 | 1   | 3  | INTRODUCTION TO COMMUNICATION |  |           |     | WEB | Flowers, Karla |

**CSEC-CYBERSECURITY**

| CRN   | CRS      | SEC | POT | Cr | Title                         | Notes | Time | Day | Rm  | Instructor |
|-------|----------|-----|-----|----|-------------------------------|-------|------|-----|-----|------------|
| 63862 | CSEC 275 | C70 | MS2 | 3  | INTRO TO APPLIED CRYPTOGRAPHY |       |      |     | WEB | TBA        |

**ECED-EARLY CHILDHOOD EDUCATION**

| CRN   | CRS       | SEC | POT | Cr | Title                          | Notes | Time | Day | Rm  | Instructor            |
|-------|-----------|-----|-----|----|--------------------------------|-------|------|-----|-----|-----------------------|
| 63639 | ECED 2120 | C71 | 1   | 3  | CURR DEV:PLAY BRTH-4 (P-K)     |       |      |     | WEB | Hess Martin, Jennifer |
| 48603 | ECED 1110 | C71 | 1   | 3  | CHLD GRWTH DEVL P & LEARNING   |       |      |     | WEB | Edokhamhen, Ehichoya  |
| 63640 | ECED 2121 | C71 | 1   | 2  | CURR DEV:PLAY BRTH-4 (P-K) PRC |       |      |     | WEB | Hess Martin, Jennifer |

New Mexico State University

Class Schedule for

**Southeast New Mexico College**

MS1 = First 8 weeks

MS2 = Second 8 weeks

SC = Short course

Note: The federal Government now says that for an online student to receive financial aid, that student must complete an assignment or discussion to be considered "attending." The assignment could be as simple as a question.

|       |           |     |   |   |                            |  |  |  |     |                      |
|-------|-----------|-----|---|---|----------------------------|--|--|--|-----|----------------------|
| 58327 | ECED 1115 | C71 | 1 | 2 | HEALTH, SAFETY & NUTRITION |  |  |  | WEB | Edokhamhen, Ehichoya |
| 62243 | ECED 1120 | C71 | 1 | 3 | GUIDING YOUNG CHILDREN     |  |  |  | WEB | Edokhamhen, Ehichoya |

**ECON-ECONOMICS**

| CRN   | CRS        | SEC | POT | Cr | Title                     | Notes | Time | Day | Rm  | Instructor   |
|-------|------------|-----|-----|----|---------------------------|-------|------|-----|-----|--------------|
| 53416 | ECON 1110G | C71 | 1   | 3  | SURVEY OF ECONOMICS       |       |      |     | WEB | TBA          |
| 43948 | ECON 2110G | C71 | 1   | 3  | MACROECONOMIC PRINCIPLES  |       |      |     | WEB | Strahan, Jon |
| 64117 | ECON 2110G | C74 | MS2 | 3  | MACROECONOMIC PRINCIPLES  |       |      |     | WEB | TBA          |
| 50705 | ECON 2120G | C71 | 1   | 3  | MICROECONOMICS PRINCIPLES |       |      |     | WEB | Strahan, Jon |

**EDUC-EDUCATION**

| CRN   | CRS       | SEC | POT | Cr | Title            | Notes | Time | Day | Rm  | Instructor  |
|-------|-----------|-----|-----|----|------------------|-------|------|-----|-----|-------------|
| 62242 | EDUC 2710 | C71 | 1   | 3  | PRE-TEACHER PREP |       |      |     | WEB | Vacca, John |

**ENGL-ENGLISH**

| CRN   | CRS        | SEC | POT | Cr | Title                         | Notes   | Time      | Day | Rm  | Instructor         |
|-------|------------|-----|-----|----|-------------------------------|---|-----------|-----|-----|--------------------|
| 44526 | ENGL 1110G | C79 | 1   | 4  | COMPOSITION I                 | This is an ALP section. Students must enroll in CCDS 113N C71 (CRN 62396) | 1730-1910 |     | WEB | Wilson, Jonathan   |
| 61754 | ENGL 1110G | C01 | 1   | 4  | COMPOSITION I                 |   | 1000-1140 |     | 250 | Fry, John          |
| 58394 | ENGL 2520G | C71 | 1   | 3  | FILM AS LITERATURE            |   | 1300-1415 |     | WEB | Biebelle, Patricia |
| 64540 | ENGL 2996  | C11 | 1   | 3  | SPECIAL TOPICS                |   | 1730-1845 |     | 224 | Biebelle, Patricia |
| 54310 | ENGL 2221G | C01 | 1   | 3  | WRITING HUMANITIES & SOC SCI  |   | 1300-1415 |     | 252 | Biebelle, Patricia |
| 60808 | ENGL 2210G | C73 | MS1 | 3  | PROFESSIONAL & TECHNICAL COMM |   |           |     | WEB | Wilson, Jonathan   |
| 60807 | ENGL 2210G | C72 | MS2 | 3  | PROFESSIONAL & TECHNICAL COMM |   |           |     | WEB | TBA                |
| 58396 | ENGL 2210G | C71 | MS1 | 3  | PROFESSIONAL & TECHNICAL COMM |   |           |     | WEB | Nichols, Bonnie    |
| 44533 | ENGL 1110G | C72 | MS2 | 4  | COMPOSITION I                 |   |           |     | WEB | Nichols, Bonnie    |
| 44528 | ENGL 1110G | C71 | MS1 | 4  | COMPOSITION I                 |   |           |     | WEB | Nichols, Bonnie    |
| 60798 | ENGL 1110G | C06 | 1   | 4  | COMPOSITION I                 |   | 1300-1440 |     | 251 | Wilson, Jonathan   |
| 55046 | ENGL 1110G | C05 | 1   | 4  | COMPOSITION I                 | This is an ALP section. Students must enroll in CCDS 113 N C02 CRN 63399. | 1300-1440 |     | 251 | Wilson, Jonathan   |
| 62427 | ENGL 1110G | C04 | 1   | 4  | COMPOSITION I                 | This is an ALP section. Students must enroll in CCDS 113N C03 CRN 62392.  | 1300-1450 |     | 251 | Fry, John          |
| 62394 | ENGL 1110G | C02 | 1   | 4  | COMPOSITION I                 | This is an ALP section. Students must enroll in CCDS 113 N C01 CRN 62395. | 1000-1140 |     | 250 | Fry, John          |
| 63404 | ENGL 1110G | C03 | 1   | 4  | COMPOSITION I                 |   | 1300-1450 |     | 251 | Fry, John          |
| 60804 | ENGL 1110G | C78 | 1   | 4  | COMPOSITION I                 |   | 1730-1910 |     | WEB | Wilson, Jonathan   |

**ENGR-ENGINEERING**

| CRN   | CRS       | SEC | POT | Cr | Title                      | Notes | Time      | Day | Rm  | Instructor       |
|-------|-----------|-----|-----|----|----------------------------|-------|-----------|-----|-----|------------------|
| 64532 | ENGR 111  | C81 | 1   | 3  | MATH FOR ENG APPLICATIONS  |       | 0830-0945 |     | 222 | Al-Nouman, Jamil |
| 64533 | ENGR 120  | C71 | 1   | 4  | DC CIRCUIT ANALYSIS        |       | 1005-1230 |     | WEB | Al-Nouman, Jamil |
| 62957 | ENGR 100G | C01 | 1   | 3  | INTRO TO ENGINEERING       |       | 0800-1000 |     | 222 | Al-Nouman, Jamil |
| 64537 | ENGR 140  | C81 | 1   | 4  | INTRO PROGR & EMBEDDED SYS |       | 1005-1230 |     | 222 | Al-Nouman, Jamil |

New Mexico State University

Class Schedule for

**Southeast New Mexico College**

MS1 = First 8 weeks

MS2 = Second 8 weeks

SC = Short course

Note: The federal Government now says that for an online student to receive financial aid, that student must complete an assignment or discussion to be considered "attending." The assignment could be as simple as a question.

**ENVS-ENVIRONMENTAL SCIENCE**

| CRN   | CRS        | SEC | POT | Cr | Title                   | Notes | Time | Day | Rm  | Instructor          |
|-------|------------|-----|-----|----|-------------------------|-------|------|-----|-----|---------------------|
| 61718 | ENVS 1110G | C01 | 1   | 4  | ENVIRONMENTAL SCIENCE I |       |      |     |     | Wiedenmann, Richard |
| 64534 | ENVS 1110G | C71 | 1   | 4  | ENVIRONMENTAL SCIENCE I |       |      |     | WEB | Wiedenmann, Richard |

**FDMA-FILM & DIGITAL MEDIA**

| CRN   | CRS       | SEC | POT | Cr | Title                | Notes | Time | Day | Rm  | Instructor    |
|-------|-----------|-----|-----|----|----------------------|-------|------|-----|-----|---------------|
| 61659 | FDMA 1535 | C71 | 1   | 3  | INTRO TO ILLUSTRATOR |       |      |     | WEB | Conard, Scott |

**FYEX-FIRST YEAR EXPERIENCE**

| CRN   | CRS       | SEC | POT | Cr | Title              | Notes | Time | Day | Rm  | Instructor     |
|-------|-----------|-----|-----|----|--------------------|-------|------|-----|-----|----------------|
| 62241 | FYEX 1110 | C71 | MS2 | 3  | FIRST-YEAR SEMINAR |       |      |     | WEB | Espino, Freddy |
| 62222 | FYEX 1110 | C72 | 1   | 3  | FIRST-YEAR SEMINAR |       |      |     | WEB | Moreno, Luz    |

**GEOG-GEOGRAPHY**

| CRN   | CRS        | SEC | POT | Cr | Title         | Notes | Time | Day | Rm  | Instructor      |
|-------|------------|-----|-----|----|---------------|-------|------|-----|-----|-----------------|
| 58279 | GEOG 1120G | C71 | 1   | 3  | WRLD REG GEOG |       |      |     | WEB | Aboargob, Faraj |
| 62207 | GEOG 1130G | C72 | 1   | 3  | HMN GEOG      |       |      |     | WEB | Aboargob, Faraj |

**GEOLOGEOLOGY**

| CRN   | CRS          | SEC | POT | Cr | Title            | Notes | Time | Day | Rm  | Instructor         |
|-------|--------------|-----|-----|----|------------------|-------|------|-----|-----|--------------------|
| 54899 | GEOLOG 1110G | C81 | 1   | 4  | PHYSICAL GEOLOGY |       |      |     |     | VanScotter, Hannah |
| 54899 | GEOLOG 1110G | C81 | 1   | 4  | PHYSICAL GEOLOGY |       |      |     | WEB | VanScotter, Hannah |

**HIST-HISTORY**

| CRN   | CRS        | SEC | POT | Cr | Title          | Notes | Time      | Day | Rm  | Instructor      |
|-------|------------|-----|-----|----|----------------|-------|-----------|-----|-----|-----------------|
| 41736 | HIST 1110G | C01 | 1   | 3  | U.S.A. HIST I  |       | 1115-1245 |     | 152 | McIntosh, David |
| 60840 | HIST 1110G | C72 | 1   | 3  | U.S.A. HIST I  |       |           |     | WEB | Miller, Frankie |
| 65442 | HIST 1120G | C01 | 1   | 3  | U.S.A. HIST II |       | 0900-1015 |     | 252 | McIntosh, David |
| 59968 | HIST 1130G | C71 | 1   | 3  | WORLD HIST I   |       |           |     | WEB | McIntosh, David |
| 58275 | HIST 1150G | C71 | MS2 | 3  | WESTERN CIV I  |       |           |     | WEB | McIntosh, David |

**HIT-HEALTH INFO TECHNOLOGY**

| CRN   | CRS     | SEC | POT | Cr | Title                 | Notes | Time      | Day | Rm  | Instructor         |
|-------|---------|-----|-----|----|-----------------------|-------|-----------|-----|-----|--------------------|
| 48996 | HIT 120 | C71 | 1   | 3  | HI INTRO PHARMACOLOGY |       |           |     | WEB | Kuh, Erin          |
| 48997 | HIT 140 | C71 | 1   | 3  | HI PATHOPHYSIOLOGY    |       |           |     | WEB | Williams, Destinee |
| 48788 | HIT 150 | C01 | 1   | 3  | INTRO MED TERMINOLOGY |       | 1130-1245 |     | 152 | Kuh, Erin          |
| 48787 | HIT 150 | C72 | 1   | 3  | INTRO MED TERMINOLOGY |       |           |     | WEB | Titus, Pamela      |
| 52188 | HIT 240 | C71 | 1   | 3  | HI QUALITY MANAGEMENT |       |           |     | WEB | Fox, Kyandra       |
| 52189 | HIT 248 | C71 | 1   | 3  | MEDICAL CODING I      |       |           |     | WEB | Fox, Kyandra       |

**INMT - INDUSTRIAL MAINTENANCE**

| CRN   | CRS      | SEC | POT | Cr | Title               | Notes | Time      | Day | Rm  | Instructor        |
|-------|----------|-----|-----|----|---------------------|-------|-----------|-----|-----|-------------------|
| 62252 | INMT 133 | C61 | MS1 | 4  | PROCESS TECH & SYST |       | 0800-0900 |     | 226 | Abdaljalil, Talal |
| 64967 | INMT 235 | C61 | MS2 | 4  | MECH DRIVES I       |       |           |     | WEB | TBA               |
| 66506 | INMT 134 | C82 | MS1 | 4  | MAINT PRINCIPLES    |       | 0900-1000 |     | 227 | Abdaljalil, Talal |
| 66507 | INMT 223 | C81 | MS2 | 4  | ELECTRICAL REPAIRS  |       | 0900-1000 |     | 227 | TBA               |

**LING-LINGUISTICS**

| CRN   | CRS        | SEC | POT | Cr | Title                         | Notes | Time | Day | Rm  | Instructor |
|-------|------------|-----|-----|----|-------------------------------|-------|------|-----|-----|------------|
| 56717 | LING 2110G | C71 | 1   | 3  | INTRO TO STUDY OF LANG & LING |       |      |     | WEB | Lee, Chang |

**MATH-MATHEMATICS**

| CRN   | CRS        | SEC | POT | Cr | Title             | Notes   | Time      | Day | Rm  | Instructor      |
|-------|------------|-----|-----|----|-------------------|---|-----------|-----|-----|-----------------|
| 43937 | MATH 1220G | C11 | 1   | 3  | COLLEGE ALGEBRA   |   | 1730-1845 |     | 252 | Chappa, Eduardo |
| 60787 | MATH 1217  | C02 | 1   | 1  | GEN SUPPL INSTR I | The student must also enroll in CRN 57305, MATH 1215 C02. | 1416-1451 |     | 151 | Chappa, Eduardo |

New Mexico State University

Class Schedule for

**Southeast New Mexico College**

MS1 = First 8 weeks

MS2 = Second 8 weeks

SC = Short course

Note: The federal Government now says that for an online student to receive financial aid, that student must complete an assignment or discussion to be considered "attending." The assignment could be as simple as a question.

|       |            |     |   |   |                        |   |           |  |     |                  |
|-------|------------|-----|---|---|------------------------|---|-----------|--|-----|------------------|
| 64528 | MATH 1521G | C01 | 1 | 4 | CALCULUS II            |   | 1000-1145 |  | 204 | Zhao, Yaxi       |
| 66416 | MATH 1511G | C71 | 1 | 4 | CALCULUS I             |   |           |  | WEB | Zhao, Yaxi       |
| 64527 | MATH 1511G | C01 | 1 | 4 | CALCULUS I             |   | 0800-0940 |  | 251 | Chappa, Eduardo  |
| 43854 | MATH 1430G | C71 | 1 | 3 | APPLICATIONS OF CALC I |   |           |  | WEB | Aryal, Pradip    |
| 45906 | MATH 1350G | C71 | 1 | 3 | INTRO TO STAT          |   |           |  | WEB | Addington, April |
| 61644 | MATH 1250G | C01 | 1 | 4 | TRIG & PRE-CALC        |   | 0800-0940 |  | 204 | Zhao, Yaxi       |
| 43824 | MATH 1220G | C72 | 1 | 3 | COLLEGE ALGEBRA        |   |           |  | WEB | Aryal, Pradip    |
| 43822 | MATH 1220G | C71 | 1 | 3 | COLLEGE ALGEBRA        |   |           |  | WEB | Zhao, Yaxi       |
| 64530 | MATH 1130G | C71 | 1 | 3 | SURVEY OF MATHEMATICS  |   |           |  | WEB | Addington, April |
| 60783 | MATH 1217  | C03 | 1 | 1 | GEN SUPPL INSTR I      | 5The student must also enroll in CRN 61675, MATH 1215, C03. | 1116-1151 |  | 251 | Chappa, Eduardo  |
| 61674 | MATH 1217  | C11 | 1 | 1 | GEN SUPPL INSTR I      | The student must also enroll in CRN 63079, MATH 1215 C11.   | 1846-1921 |  | 151 | Zhao, Yaxi       |
| 58269 | MATH 1215  | C73 | 1 | 3 | INTERMEDIATE ALGEBRA   | The student must also enroll in CRN 63080, MATH 1217 C73.   | 1300-1415 |  | WEB | Chappa, Eduardo  |
| 60788 | MATH 1215  | C71 | 1 | 3 | INTERMEDIATE ALGEBRA   |   |           |  | WEB | Zhao, Yaxi       |
| 63079 | MATH 1215  | C11 | 1 | 3 | INTERMEDIATE ALGEBRA   | The student must also enroll in CRN 61674, MATH 1217 C11.   | 1730-1845 |  | 151 | Zhao, Yaxi       |
| 61675 | MATH 1215  | C03 | 1 | 3 | INTERMEDIATE ALGEBRA   | The student must also enroll in CRN 60783, MATH 1217, C03.  | 1000-1115 |  | 251 | Chappa, Eduardo  |
| 57305 | MATH 1215  | C02 | 1 | 3 | INTERMEDIATE ALGEBRA   | The student must also enroll in CRN 60787, MATH 1217 C02.   | 1300-1415 |  | 151 | Chappa, Eduardo  |
| 64529 | MATH 1134  | C71 | 1 | 3 | FUND ELEM MATH I       |   | 1730-1845 |  | WEB | Addington, April |
| 63080 | MATH 1217  | C73 | 1 | 1 | GEN SUPPL INSTR I      | The student must also enroll in CRN 58269, MATH 1215 C73.   | 1416-1451 |  | WEB | Chappa, Eduardo  |

**MGMT-MANAGEMENT**

| CRN   | CRS       | SEC | POT | Cr | Title                   | Notes | Time | Day | Rm  | Instructor   |
|-------|-----------|-----|-----|----|-------------------------|-------|------|-----|-----|--------------|
| 48687 | MGMT 2110 | C71 | MS2 | 3  | PRINCIPLES OF MANGEMENT |       |      |     | WEB | Strahan, Jon |

**MUSC-MUSIC**

| CRN   | CRS        | SEC | POT | Cr | Title                    | Notes | Time | Day | Rm  | Instructor         |
|-------|------------|-----|-----|----|--------------------------|-------|------|-----|-----|--------------------|
| 64541 | MUSC 1110G | C71 | MS1 | 3  | MUSIC APPRECIATION: JAZZ |       |      |     | WEB | Blagoeva, Hristina |
| 61934 | MUSC 1130G | C72 | MS2 | 3  | WESTERN MUSIC            |       |      |     | WEB | Blagoeva, Hristina |

**NA - NURSING ASSISTANT**

| CRN   | CRS    | SEC | POT | Cr | Title                   | Notes  | Time      | Day | Rm  | Instructor       |
|-------|--------|-----|-----|----|-------------------------|--|-----------|-----|-----|------------------|
| 56762 | NA 101 | C82 | SC  | 6  | NURS AIDE THRY & LAB    | Class will meet November 7 through November 18 from 8:30 am to 4:00 pm. Meets in person Monday through Friday for lecture and lab. 100% attendance is mandatory. Additional assignments are completed online through Canvas. | 0830-1600 |     | 423 | Florez, Sandra   |
| 66433 | NA 101 | C83 | SC  | 6  | NURS AIDE THRY & LAB    | Class to meet October 10 through October 21 from 8:30 am to 4:00 pm. Meets in person Monday-Friday for lecture and lab. 100% attendance is mandatory. Additional assignments are completed online through Canvas.            | 0830-1600 |     | 423 | Florez, Sandra   |
| 58499 | NA 115 | C01 | 1   | 6  | Phlebotomist Technician |  | 1400-1700 |     | 423 | Dela Cruz, Lorna |
| 58499 | NA 115 | C01 | 1   | 6  | Phlebotomist Technician |  | 1300-1700 |     | 423 | Dela Cruz, Lorna |



New Mexico State University

Class Schedule for

**Southeast New Mexico College**

MS1 = First 8 weeks  
MS2 = Second 8 weeks  
SC = Short course

Note: The federal Government now says that for an online student to receive financial aid, that student must complete an assignment or discussion to be considered "attending." The assignment could be as simple as a question.

|       |        |     |    |   |                      |   |           |  |     |                |
|-------|--------|-----|----|---|----------------------|---|-----------|--|-----|----------------|
| 54616 | NA 101 | C81 | SC | 6 | NURS AIDE THRY & LAB | Class to meet September 12 through September 23 from 8:30 am to 4:00 pm. Meets in person Monday-Friday for lecture and lab. 100% attendance is mandatory. Additional assignments are completed online through Canvas. | 0830-1600 |  | 423 | Florez, Sandra |
|-------|--------|-----|----|---|----------------------|---|-----------|--|-----|----------------|

**NGEC-NATURAL GAS ENGINE COMP**

| CRN   | CRS      | SEC | POT | Cr | Title                   | Notes | Time      | Day | Rm  | Instructor      |
|-------|----------|-----|-----|----|-------------------------|-------|-----------|-----|-----|-----------------|
| 64069 | NGEC 175 | C11 | 1   | 4  | NATURAL GAS COMP TECH I |       | 1130-1330 |     | 227 | Orozco, Osvaldo |

**NURS-NURSING**

| CRN   | CRS      | SEC | POT | Cr | Title                 | Notes | Time      | Day | Rm  | Instructor      |
|-------|----------|-----|-----|----|-----------------------|-------|-----------|-----|-----|-----------------|
| 45236 | NURS 246 | C01 | 1   | 7  | HEALTH DEVIATIONS I   |       |           |     | NCR | Zuniga, Gina    |
| 58111 | NURS 156 | C01 | 1   | 6  | BASIC NURS THRY/PRCT  |       | 0830-1130 |     | 424 | Titus, Pamela   |
| 62199 | NURS 258 | C01 | 1   | 3  | PSY-SOC REQ:DFT APRH  |       |           |     | NCR | Warrior, Tori   |
| 45236 | NURS 246 | C01 | 1   | 7  | HEALTH DEVIATIONS I   |       | 0900-1159 |     | 425 | Zuniga, Gina    |
| 62198 | NURS 211 | C01 | 1   | 1  | PHARM REQ OF SIMP DEV |       | 0830-0920 |     | 425 | Hardin, Dianne  |
| 62196 | NURS 155 | C01 | 1   | 2  | SPECIAL TOPICS        |       | 1300-1450 |     | 424 | Rayroux, Audrie |
| 58110 | NURS 154 | C01 | 1   | 2  | PHYSICAL ASSMNT       |       | 0830-1000 |     | 424 | Childs, Ashley  |
| 62195 | NURS 153 | C01 | 1   | 1  | MDCTN & DOSAGE CLCLTN |       | 1030-1130 |     | 424 | Titus, Pamela   |
| 62199 | NURS 258 | C01 | 1   | 3  | PSY-SOC REQ:DFT APRH  |       | 0930-1150 |     | 425 | Warrior, Tori   |
| 45218 | NURS 150 | C72 | 1   | 3  | MEDICAL TERMINOLOGY   |       |           |     | WEB | Titus, Pamela   |
| 45219 | NURS 150 | C01 | 1   | 3  | MEDICAL TERMINOLOGY   |       | 1130-1245 |     | 152 | Kuh, Erin       |
| 58111 | NURS 156 | C01 | 1   | 6  | BASIC NURS THRY/PRCT  |       |           |     | NCR | Titus, Pamela   |

**NUTR-NUTRITION**

| CRN   | CRS       | SEC | POT | Cr | Title           | Notes | Time | Day | Rm  | Instructor |
|-------|-----------|-----|-----|----|-----------------|-------|------|-----|-----|------------|
| 60672 | NUTR 2110 | C71 | 1   | 3  | HUMAN NUTRITION |       |      |     | WEB | Kuh, Erin  |

**OATS-OFFICE ADMIN TECH SYSTEMS**

| CRN   | CRS      | SEC | POT | Cr | Title                     | Notes | Time | Day | Rm  | Instructor         |
|-------|----------|-----|-----|----|---------------------------|-------|------|-----|-----|--------------------|
| 58403 | OATS 105 | C71 | MS2 | 3  | BUSINESS ENGLISH          |       |      |     | WEB | Wilkes, Evangeline |
| 60705 | OATS 150 | C71 | 1   | 3  | MEDICAL TERMINOLOGY       |       |      |     | WEB | Titus, Pamela      |
| 63766 | OATS 202 | C71 | MS2 | 3  | KEYBRDNG DOCMNT PRODCTN   |       |      |     | WEB | TBA                |
| 48990 | OATS 208 | C71 | 1   | 3  | MEDICAL OFFICE PROCEDURES |       |      |     | WEB | Fox, Kyandra       |
| 63765 | OATS 270 | C71 | 1   | 3  | OAT CAPSTONE              |       |      |     | WEB | Ragona, Lisbeth    |

**OECS-COMPUTER TECHNOLOGY**

| CRN   | CRS      | SEC | POT | Cr | Title                   | Notes | Time | Day | Rm  | Instructor      |
|-------|----------|-----|-----|----|-------------------------|-------|------|-----|-----|-----------------|
| 41540 | OECS 211 | C71 | MS2 | 3  | WORDPRCSNG APPLICATIONS |       |      |     | WEB | TBA             |
| 64966 | OECS 211 | C72 | MS1 | 3  | WORDPRCSNG APPLICATIONS |       |      |     | WEB | McKenzie, Norma |
| 66048 | OECS 200 | C71 | MS1 | 3  | ACCTG ON MICROCMPTRS    |       |      |     | WEB | TBA             |
| 41542 | OECS 215 | C71 | MS2 | 3  | SPRDSHT APPLCTNS        |       |      |     | WEB | Mohamed, Fuad   |

**OEET- ELECTRICAL TRADES**

| CRN   | CRS      | SEC | POT | Cr | Title          | Notes | Time | Day | Rm  | Instructor        |
|-------|----------|-----|-----|----|----------------|-------|------|-----|-----|-------------------|
| 60836 | OEET 295 | C71 | 1   | 2  | SPECIAL TOPICS |       |      |     | WEB | Abdaljalil, Talal |

**OETS-TECHNICAL STUDIES**

| CRN   | CRS      | SEC | POT | Cr | Title                  | Notes | Time | Day | Rm  | Instructor        |
|-------|----------|-----|-----|----|------------------------|-------|------|-----|-----|-------------------|
| 64329 | OETS 118 | C72 | MS2 | 3  | MATH FOR TECHNICIANS   |       |      |     | WEB | TBA               |
| 54068 | OETS 100 | C71 | MS1 | 2  | INDSTR/L/CNSTRCTN SFTY |       |      |     | WEB | Abdaljalil, Talal |

New Mexico State University

Class Schedule for

**Southeast New Mexico College**

MS1 = First 8 weeks

MS2 = Second 8 weeks

SC = Short course

Note: The federal Government now says that for an online student to receive financial aid, that student must complete an assignment or discussion to be considered "attending." The assignment could be as simple as a question.

|       |          |     |     |   |                        |  |  |  |     |                   |
|-------|----------|-----|-----|---|------------------------|--|--|--|-----|-------------------|
| 64332 | OETS 100 | C73 | MS2 | 2 | INDSTR/L/CNSTRCTN SFTY |  |  |  | WEB | TBA               |
| 66505 | OETS 102 | C71 | MS2 | 1 | CAREER READ CERT PREP  |  |  |  | WEB | TBA               |
| 62250 | OETS 118 | C71 | 1   | 3 | MATH FOR TECHNICIANS   |  |  |  | WEB | Abdaljalil, Talal |

**PHED-PHYSICAL EDUCATION**

| CRN   | CRS       | SEC | POT | Cr | Title              | Notes | Time      | Day | Rm  | Instructor      |
|-------|-----------|-----|-----|----|--------------------|-------|-----------|-----|-----|-----------------|
| 62430 | PHED 1910 | C51 | SC  | 1  | OUTDOOR EXPERIENCE |       | 1730-1930 |     | 106 | Weston, William |
| 62430 | PHED 1910 | C51 | SC  | 1  | OUTDOOR EXPERIENCE |       | 0800-1700 |     | NCR | Weston, William |

**PHIL-PHILOSOPHY**

| CRN   | CRS        | SEC | POT | Cr | Title               | Notes | Time | Day | Rm  | Instructor     |
|-------|------------|-----|-----|----|---------------------|-------|------|-----|-----|----------------|
| 62208 | PHIL 1115G | C71 | 1   | 3  | INTRO TO PHILOSOPHY |       |      |     | WEB | Salamah, Allaa |
| 65443 | PHIL 2110G | C71 | 1   | 3  | INTRO TO ETHICS     |       |      |     | WEB | Salamah, Allaa |

**PHLS-PUBLIC HEALTH SCIENCES**

| CRN   | CRS        | SEC | POT | Cr | Title                      | Notes | Time | Day | Rm  | Instructor   |
|-------|------------|-----|-----|----|----------------------------|-------|------|-----|-----|--------------|
| 62212 | PHLS 1110G | C71 | 1   | 3  | PERSONAL HEALTH & WELLNESS |       |      |     | WEB | Zuniga, Gina |

**PHYS-PHYSICS**

| CRN   | CRS        | SEC | POT | Cr | Title                        | Notes | Time | Day | Rm  | Instructor       |
|-------|------------|-----|-----|----|------------------------------|-------|------|-----|-----|------------------|
| 61705 | PHYS 1230L | C71 | 1   | 1  | ALGEBRA-BASED PHYSICS I LAB  |       |      |     | WEB | Al-Nouman, Jamil |
| 61707 | PHYS 1310G | C71 | 1   | 3  | CALC-BASED PHYSICS I         |       |      |     | WEB | Al-Nouman, Jamil |
| 61708 | PHYS 1310L | C71 | 1   | 1  | CALC-BASED PHYSICS I LAB     |       |      |     | WEB | Al-Nouman, Jamil |
| 61702 | PHYS 1230G | C71 | 1   | 3  | ALGEBRA-BASED PHYSICS I      |       |      |     | WEB | Al-Nouman, Jamil |
| 58305 | PHYS 1115G | C71 | 1   | 4  | SURV OF PHYS WITH LAB        |       |      |     | WEB | Huang, Yiqun     |
| 61558 | PHYS 1240L | C71 | 1   | 1  | ALGEBRA-BASED PHYSICS II LAB |       |      |     | WEB | Al-Nouman, Jamil |
| 61557 | PHYS 1240G | C71 | 1   | 3  | ALGEBRA-BASED PHYSICS II     |       |      |     | WEB | Al-Nouman, Jamil |

**POLS-POLITICAL SCIENCE**

| CRN   | CRS        | SEC | POT | Cr | Title              | Notes | Time | Day | Rm  | Instructor   |
|-------|------------|-----|-----|----|--------------------|-------|------|-----|-----|--------------|
| 59980 | POLS 1120G | C71 | 1   | 3  | AMER NATIONAL GOVT |       |      |     | WEB | Armijo, Juan |
| 65444 | POLS 1120G | C72 | MS2 | 3  | AMER NATIONAL GOVT |       |      |     | WEB | TBA          |

**PSYC-PSYCHOLOGY**

| CRN   | CRS        | SEC | POT | Cr | Title         | Notes | Time      | Day | Rm  | Instructor        |
|-------|------------|-----|-----|----|---------------|-------|-----------|-----|-----|-------------------|
| 66119 | PSYC 1110G | C11 | 1   | 3  | INTRO TO PSYC |       | 1130-1245 |     |     | Hamedi, Jalal     |
| 66118 | PSYC 1110G | C12 | 1   | 3  | INTRO TO PSYC |       | 1730-1845 |     |     | Hamedi, Jalal     |
| 61671 | PSYC 1110G | C72 | MS2 | 3  | INTRO TO PSYC |       |           |     | WEB | TBA               |
| 63948 | PSYC 1110G | C73 | 1   | 3  | INTRO TO PSYC |       |           |     | WEB | Cantwell, Felecia |
| 62211 | PSYC 1110G | C75 | 1   | 3  | INTRO TO PSYC |       |           |     | WEB | Hamedi, Jalal     |

**SOCI-SOCIOLOGY**

| CRN   | CRS        | SEC | POT | Cr | Title                     | Notes | Time      | Day | Rm  | Instructor    |
|-------|------------|-----|-----|----|---------------------------|-------|-----------|-----|-----|---------------|
| 44394 | SOCI 1110G | C01 | 1   | 3  | INTRODUCTION TO SOCIOLOGY |       | 1130-1245 |     | 252 | Hamedi, Jalal |
| 61716 | SOCI 1110G | C71 | 1   | 3  | INTRODUCTION TO SOCIOLOGY |       |           |     | WEB | Hamedi, Jalal |
| 48617 | SOCI 2310G | C71 | 1   | 3  | CONTEM SOCIAL PROBLEMS    |       |           |     | WEB | Hamedi, Jalal |

**SOWK-SOCIAL WORK**

| CRN   | CRS        | SEC | POT | Cr | Title                      | Notes | Time      | Day | Rm  | Instructor     |
|-------|------------|-----|-----|----|----------------------------|-------|-----------|-----|-----|----------------|
| 66200 | SOWK 2110G | C11 | 1   | 3  | INTRO TO HUMAN SERV & SOWK |       | 1730-1845 |     | 251 | Kirkes, Marti  |
| 44358 | SOWK 2110G | C71 | 1   | 3  | INTRO TO HUMAN SERV & SOWK |       |           |     | WEB | Bryant, Celina |

New Mexico State University

Class Schedule for

**Southeast New Mexico College**

MS1 = First 8 weeks

MS2 = Second 8 weeks

SC = Short course

Note: The federal Government now says that for an online student to receive financial aid, that student must complete an assignment or discussion to be considered "attending." The assignment could be as simple as a question.

**SPAN-SPANISH**

| CRN   | CRS       | SEC | POT | Cr | Title      | Notes | Time      | Day | Rm  | Instructor |
|-------|-----------|-----|-----|----|------------|-------|-----------|-----|-----|------------|
| 53452 | SPAN 1110 | C71 | MS1 | 4  | SPANISH I  |       |           |     | WEB | Lee, Chang |
| 63407 | SPAN 1120 | C01 | MS2 | 4  | SPANISH II |       | 1000-1140 |     | 251 | Lee, Chang |
| 53454 | SPAN 1120 | C71 | MS2 | 4  | SPANISH II |       |           |     | WEB | Lee, Chang |
| 41320 | SPAN 1110 | C01 | MS1 | 4  | SPANISH I  |       | 1000-1140 |     | 251 | Lee, Chang |

**SURG-SURGICAL TECHNOLOGY**

| CRN   | CRS      | SEC | POT | Cr | Title                        | Notes | Time      | Day | Rm  | Instructor     |
|-------|----------|-----|-----|----|------------------------------|-------|-----------|-----|-----|----------------|
| 59475 | SURG 150 | C81 | 1   | 5  | SURG PROCEDURES I            |       | 1600-1930 |     | 424 | Varela, Tomas  |
| 58173 | SURG 140 | C81 | 1   | 4  | INTRO SURGI TECH             |       | 1600-1720 |     | 424 | Cheadle, Laura |
| 58183 | SURG 145 | C81 | 1   | 5  | FUND PERIOP<br>CONCP/TECHNIQ |       | 1600-2015 |     | 424 | Wilson, Misti  |

**WELD-WELDING TECHNOLOGY**

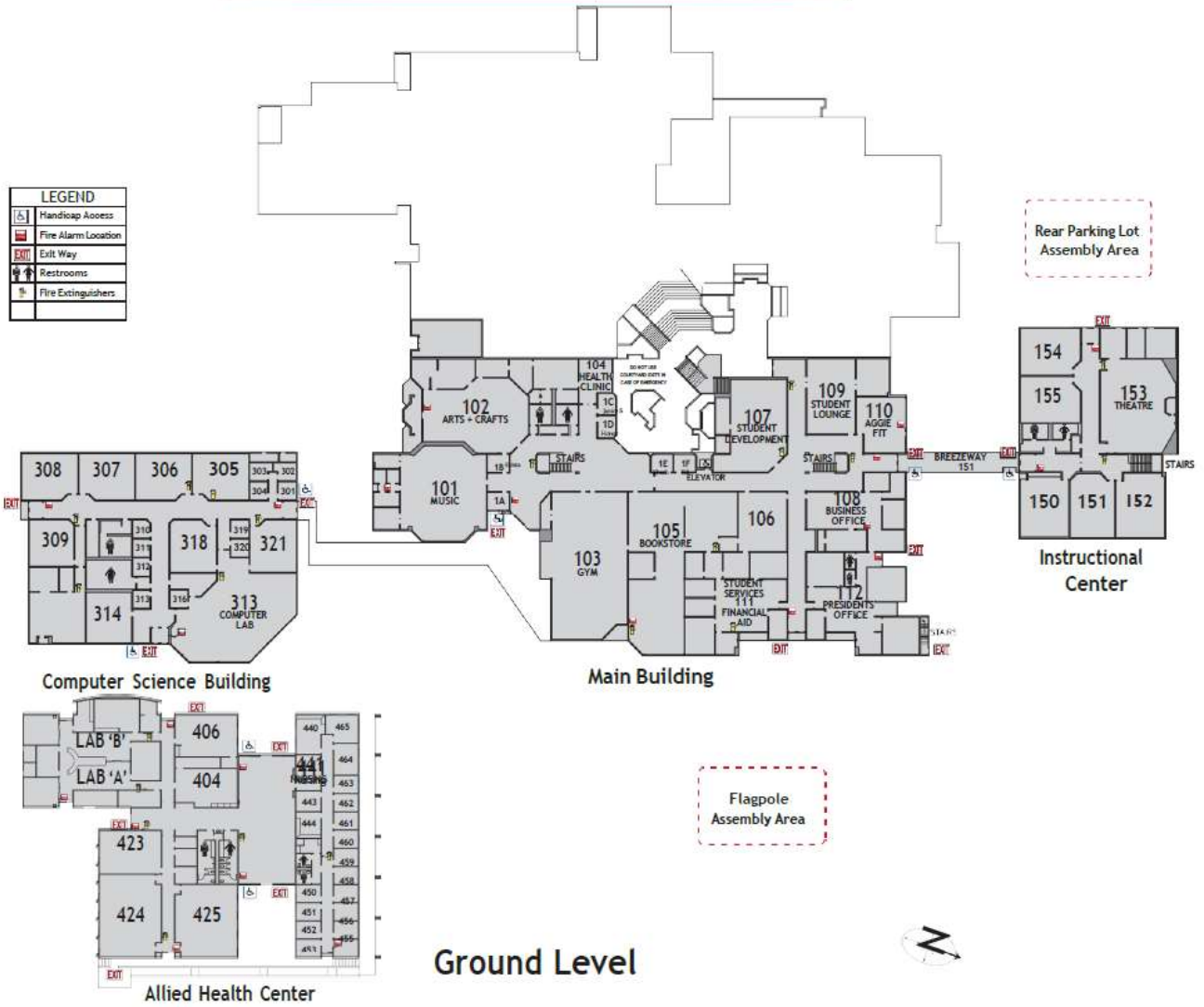
| CRN   | CRS      | SEC | POT | Cr | Title                 | Notes | Time      | Day | Rm  | Instructor        |
|-------|----------|-----|-----|----|-----------------------|-------|-----------|-----|-----|-------------------|
| 45784 | WELD 140 | C11 | 1   | 3  | INTRO TO GTAW (TIG)   |       | 1840-1955 |     | 225 | King, Christopher |
| 45783 | WELD 130 | C11 | 1   | 3  | INTRO TO GMAW (MIG)   |       | 1700-1815 |     | 225 | King, Christopher |
| 49706 | WELD 126 | C11 | 1   | 3  | INDUSTR PIPE WLDNG I  |       | 1845-2000 |     | 225 | King, Christopher |
| 45778 | WELD 125 | C11 | 1   | 3  | INTRDN-PIPE WELDING   |       | 1700-1815 |     | 225 | King, Christopher |
| 66050 | WELD 110 | C11 | 1   | 3  | BLUEPRINT RDG (WLDNG) |       | 1700-1830 |     | 225 | Linney, Sheena    |
| 52233 | WELD 100 | C11 | 1   | 6  | STRCTRL WELDING I     |       | 1500-2000 |     | 225 | King, Christopher |
| 66049 | WELD 170 | C11 | 1   | 3  | WELDED FABRICATION    |       | 1700-1815 |     | 225 | Linney, Sheena    |
| 53685 | WELD 105 | C01 | 1   | 3  | INTRDN TO WELDING     |       | 0800-1130 |     | 225 | King, Christopher |

**Southeast New Mexico College**

MS1 = First 8 weeks  
MS2 = Second 8 weeks  
SC = Short course

Note: The federal Government now says that for an online student to receive financial aid, that student must complete an assignment or discussion to be considered "attending." The assignment could be as simple as a question.

# SENMCM

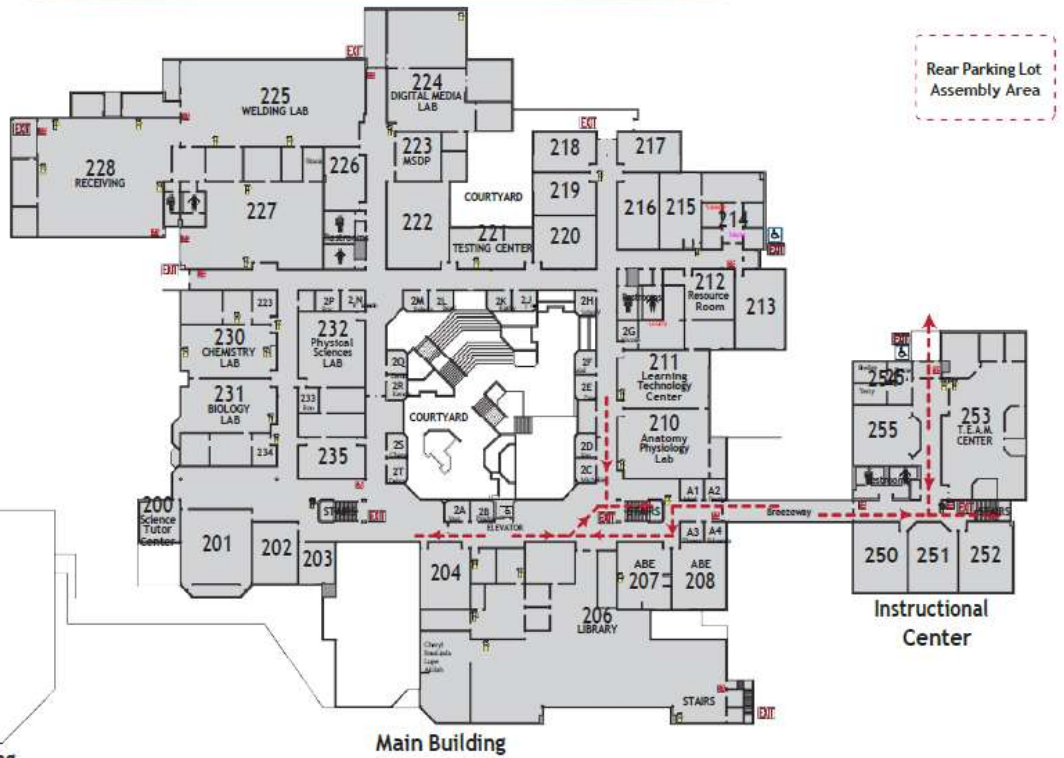


**Southeast New Mexico College**

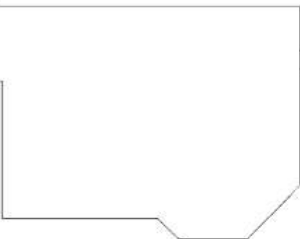
MS1 = First 8 weeks  
MS2 = Second 8 weeks  
SC = Short course

Note: The federal Government now says that for an online student to receive financial aid, that student must complete an assignment or discussion to be considered "attending." The assignment could be as simple as a question.

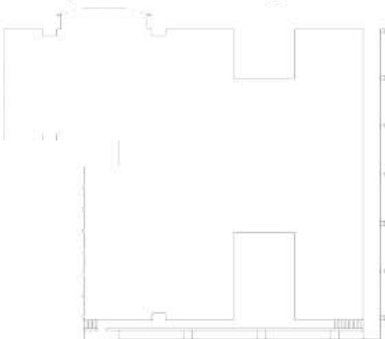
# SENMCM



| LEGEND |                     |
|--------|---------------------|
|        | Handicap Access     |
|        | Fire Alarm Location |
|        | Exit Way            |
|        | Restrooms           |
|        | Fire Extinguishers  |



Computer Science Building



Allied Health Center

Second Floor

